



## 2015 A-Class Catamaran World Championship

### Punta Ala - Italy

Centro Velico Punta Ala ASD

5 – 12 September 2015

## SAILING INSTRUCTIONS

### 1 RULES

- 1.1 The regatta will be governed by the rules as defined in *The Racing Rules of Sailing 2013-2016* (RRS)
- 1.2 No national authority prescriptions will apply.
- 1.3 Furthermore, the I.A.C.A Championship Rules will apply except where modified by these sailing instructions.
- 1.4 Decisions of the International Jury will be final as provided in RRS 70.5.
- 1.5 RRS 44.1, 44.2 and P2.1 are changed so that the Two-Turns Penalty is replaced by One Turn Penalty.
- 1,6 In all rules governing this regatta:



- 1.6.1 [DP] denotes a rule for which the penalty is at the discretion of the International Jury;
- 1.6.2 [SP] denotes a rule for which a standard penalty may be applied by the race committee without a hearing or a discretionary penalty applied by the International Jury with a hearing; and
- 1.6.3 [NP] denotes a rule that shall not be grounds for protests by a boat. This changes RRS 60.1(a).
- 1.7 If there is a conflict between languages the English text will take precedence.

## 2 NOTICES TO COMPETITORS

- 2.1 Notices to competitors will be posted on the official notice board(s) located at the dinghy park near the race office on the left.
- 2.2 Notices will also be posted on the [www.aclassworlds2015.it](http://www.aclassworlds2015.it) website. Failure to post a notice on the website will not be grounds for redress. This changes RRS 62.

## 3 CHANGES TO SAILING INSTRUCTIONS

Any change to the sailing instructions or to the schedule of races will be posted before 20.00 on the day before it will take effect.

## 4 SIGNALS MADE ASHORE

- 4.1 Signals made ashore will be displayed at the flagpole located on the beach near the main entrance to the dinghy park on the right and on the left (two flagpoles).
- 4.2 When flag AP is displayed ashore, '1 minute' is replaced with 'not less than 60 minutes' in the race signal AP.

## 5 SPLITTING OF PARTECIPANS INTO 2 FLEETS (NP)

5.1 Fleet splitting will be random.

5.2 After the first day of qualification races, the participants are regrouped in two qualification fleets according their ranking.

<u>Fleet I</u>	<u>Fleet II</u>
1	2
4	3
5	6
8	7



9	....
---	------

5.3 The qualification fleets will be balanced in respect of number of sailors.

## 6 SCHEDULE OF RACES (NP)

6.1	1. Friday	04/9	09.00-13.00 14.00-18.00	Registration and measurement
	2. Saturday	05/9	09.00-13.00 14.00-17.30 18.00	Registration and measurement Open Ceremony and Flag parade
	3. Sunday	06/9	09.00-13.00 14.00-18.00 13.00 14.00	Registration and measurement Competitors' briefing Warning Signal-practice race Fleet I + II
	4. Monday	07/9	13.00	2 Races of each qualification Fleet I + II
	5. Tuesday	08/9	13.00	Races of each qualification Fleet I + II

Formation of Gold- and Silver-fleet according the classification of the qualification races when 4 races have been completed. The best 50 % of the qualification will race in the Gold-fleet and the rest in the Silver-fleet.

6.	Wednesday	09/9	13.00	2 Races for Gold and 2 races for Silver fleet
7.	Thursday	10/9	13.00	2 Races for Gold and 2 races for Silver fleet
8.	Friday	11/9	13.00	1 Race for Gold and 1 races for Silver fleet
9.	Saturday	12/9		Reserve Day

If for any reason day 3 and 4 did not allow a minimum of 4 races per qualification fleet, qualification races will continue until 4 races per fleet have been achieved. Gold and Silver fleets for finals races will only be decided once each fleet has sailed 4 races.



- 6.2 A total number of 9 races are scheduled. Two races shall be sailed normally per day. The Race Officer may announce three races for the next day only with the approval of the formal delegate of the I.A.C.A. Committee, if the regatta may fail the min. number of races to constitute a series or if it is necessary to complete the qualification races.
- 6.3 The reserve day will be used for racing if less than 5 races have been completed by Friday 11 September. If the reserve day will be used, the schedule will be posted on the official notice board Friday 11 September before 20.00.
- 6.4 Provided that at least 5 races have been completed, no warning signal will be made after 16.00 on Friday 11 September. No warning signal will be made after 16.00 on Saturday 12 September if the reserve day is to be used.

## **7 CLASS FLAG**

The class flag will be the A-Cat Logo.

## **8 RACING AREAS**

Attachment 1 shows the approximate location of the racing areas.

- 8.1 On day 1 (Mon. 7<sup>th</sup>) fleet I will be on Race Area A and Fleet II will be on Race Area B. On the day 2 (Tues. 8<sup>th</sup>) the Race Areas will be the opposite. The same will be for the final races.

## **9 THE COURSE**

- 9.1 The diagram in Attachment 3 shows the course, including the approximate angles between legs, the order in which marks are to be passed, and the side on which each mark is to be left.
- 9.2 No later than the warning signal, the race committee signal boat will display the approximate compass bearing of the first leg.

## **10 MARKS**

- 10.1 Marks 1, 2, 3A and 3B will be large ORANGE cylinders.
- 10.2 The starting marks will be two race committee vessels displaying orange flags. The finishing marks will be two race committee vessels displaying orange flags.
- 10.3 Marks 3A and 3B will be gate marks.
- 10.4 If one of the leeward gate marks is missing the remaining gate mark shall be rounded leaving it to port. This changes RRS 34.



## **11 THE START**

- 11.1 Races will be started by using rule 26. After the first of day to alert boats that a race will begin soon, an orange flag will be displayed with one sound. The orange flag will be displayed for at least **five** minutes before a warning signal is displayed
- 11.2 The starting line will be between staffs displaying orange flags on the starting vessels.
- 11.3 A boat starting later than 4 minutes after her starting signal will be scored Did Not Start without a hearing. This changes rules A4 and A5.
- 11.4 If flag U has been displayed as the preparatory signal, no part of a boat's hull, crew or equipment shall be in the triangle formed by the ends of the starting line and the first mark during the last minute before her starting signal. If a boat breaks this rule and is identified, she shall be disqualified without a hearing but not if the race is restarted or re-sailed. This changes RRS 26 and A5. When flag U is used as the preparatory signal, RRS 29.1 does not apply. The scoring abbreviation for a flag U penalty is UFD. This changes RRS A11.

## **12 CHANGE OF THE NEXT LEG OF THE COURSE**

-

To change the next leg of the course, the race committee will (a) lay a new mark of different color (YELLOW), (b) move the finishing line, or (c) move the leeward gate. When a new mark is laid, the original mark will be removed as soon as possible. When in a subsequent change a new mark is replaced, it will be replaced by an original mark. When mark 1 has been replaced, mark 2 will not be reset. This changes RRS 32

## **13 THE FINISH**

The finishing line will be between a staff displaying an orange flag on the race Committee vessel and a staff displaying an orange flag on the nearby race committee vessel.

## **14 PENALTY SYSTEM**

Rule 44.1 changed so that One Turn Penalty replaces the Two Turns Penalty.

## **15 TIME LIMITS AND TARGET TIMES (NP)**

- 15.1 The target time for the first boat to finish is 60 minutes. Any deviation from the target time will not be grounds for a request for redress. This changes rule 62.1 (a).
- 15.2 The time limit for the first boat to sail the course and finish will be 90 minutes.



- 15.3 Boats failing to finish within 30 minutes after the first boat sails the course and finishes will be scored Did Not Finish without a hearing. This changes rules 35, A4 and A5.

## 16 PROTESTS AND REQUESTS FOR REDRESS

- 16.1 Protest forms are available at the race office. Protests and requests for redress or reopening shall be delivered there within the appropriate time limit.
- 16.2 The protest time limit is 90 minutes after the last boat has finished the last race of the day or after instruction 15.3 has been applied to that race.
- 16.3 Notices will be posted no later than 30 minutes after the protest time limit to inform competitors of hearings in which they are parties or named as witnesses. Hearings will be held in the protest room, located in the main club house, beginning at the time posted.
- 16.4 Notices of protests by the race committee or jury will be posted to inform boats under rule 61.1(b).
- 16.5 The scoring abbreviation for a discretionary penalty imposed under this instruction will be DPI.
- 16.7 On the last scheduled day of racing a request for reopening of a hearing shall be delivered
- (a) within the protest time limit if the requesting party was informed of the decision on the previous day;
  - (b) no later than 30 minutes after the requesting party was informed of the decision on that day.

This changes rule 66.

- 16.8 On the last scheduled day of racing a request for redress from a jury decision shall be delivered no later than 30 minutes after the decision was posted. This changes rule 62.2.

## 17 SCORING

- 17.1 a minimum of 5 races (4 qualifications races +1 final race) must be completed to constitute a World Championship series.
- 17.2 (a) When 4 qualification races have been completed, a participant may discard their worst result.
- (b) The final score will be the sum of the qualifying races and the final races less the competitors' worst race. A min. of 5 final races counts for the validation of the Championship.



- 17.3 To request correction of an alleged error in posted race or series results, a boat shall complete a scoring enquiry form available at the race office.

## **18 SAFETY REGULATIONS (DP) (NP)**

- 18.1 Competitors shall wear personal flotation devices at all times while afloat, except briefly while changing or adjusting clothing or personal equipment.
- 18.2 A boat that retires from a race *shall* notify the race committee as soon as possible.
- 18.3 Boats retiring from racing shall complete a retirement declaration form and deliver to the race office before the protest time limit.

## **19 REPLACEMENT OF EQUIPMENT (NP)(DP)**

Substitution of damaged or lost equipment will not be allowed unless authorized by the race committee or jury. Requests for substitution shall be made at the first reasonable opportunity.

## **20 EQUIPMENT AND MEASUREMENT CHECKS**

A boat or equipment may be inspected at any time for compliance with the class rules and sailing instructions. On the water, a boat can be instructed by a race committee equipment inspector or measurer to proceed immediately to a designated area for inspection.

## **21 OFFICIAL BOATS**

Official boats will be identified as follows:

Race committee	White flag with the letters RC.
Jury	White flag with the letter J.
Rescue boats	White flag with a Number and the Club Burgee.
Measurer	White flag with the letter M.
Press and media	White flag with the letter P.

## **22 SUPPORT BOATS (NP and DP)**

- 22.1 Coaches, team leaders and representatives from participating nations shall register at the Regatta Office before the first racing day. They must display the Organizing Committee Flag and boat number upon a deposit of 50 Euros.
- 22.2 Team leaders, coaches and other support personnel shall stay outside areas where boats are racing from the time of the preparatory signal until all boats have finished or retired or the race committee signals a postponement, general recall or abandonment.
- 22.3 Support boats shall display their national flag or country letters in accordance with I.A.C.A. Championship Rules.



### **23 RADIO COMMUNICATION (NP) (DP)**

No equipment capable of making radio transmissions or receiving radio communications may be carried by any competitor while on the water (except if provided by the organizing authority). This restriction also applies to mobile telephones.

### **24 PRIZES**

- 24.1 Trophies or prizes will be awarded to at least the top ten finishers of the Championship in Gold and Silver fleet.
- 24.2 Trophies will also be awarded to the top placed junior (aged less than 25), top placed woman, master (aged 45-50), grand master (aged 50-55) and great grand master (aged 55 plus).

### **25 DISCLAIMER OF LIABILITY**

26.1 The Centro Velico Punta Ala asd in association with the Italian A-Class Association and their officers, members and volunteers do not accept liability for loss of life or property, or personal injury or damage caused by or arising out of the regatta and competitors take part in the regatta at their own risk.

26.2 The establishment of the Notice of Race and the sailing Instruction in no way limits or reduces the complete and unlimited responsibilities of a competitor being solely and entirely responsible for the management of a boat he is sailing.

26.3 A competitor shall maintain their boat in a safe and seaworthy condition.

26.4 A competitor shall be of good health and a competent sailor capable of racing a A-class in open water in strong winds and it his sole responsibility to decide to participate in a race or to continue racing.

26.5 A competitor is recommended to have personal accident and health insurance that covers them while attending the regatta and whilst racing.

### **26 INSURANCE**

Each participating boat shall be insured with valid third-party liability insurance with a minimum cover of € 1,000,000 per event or the equivalent.

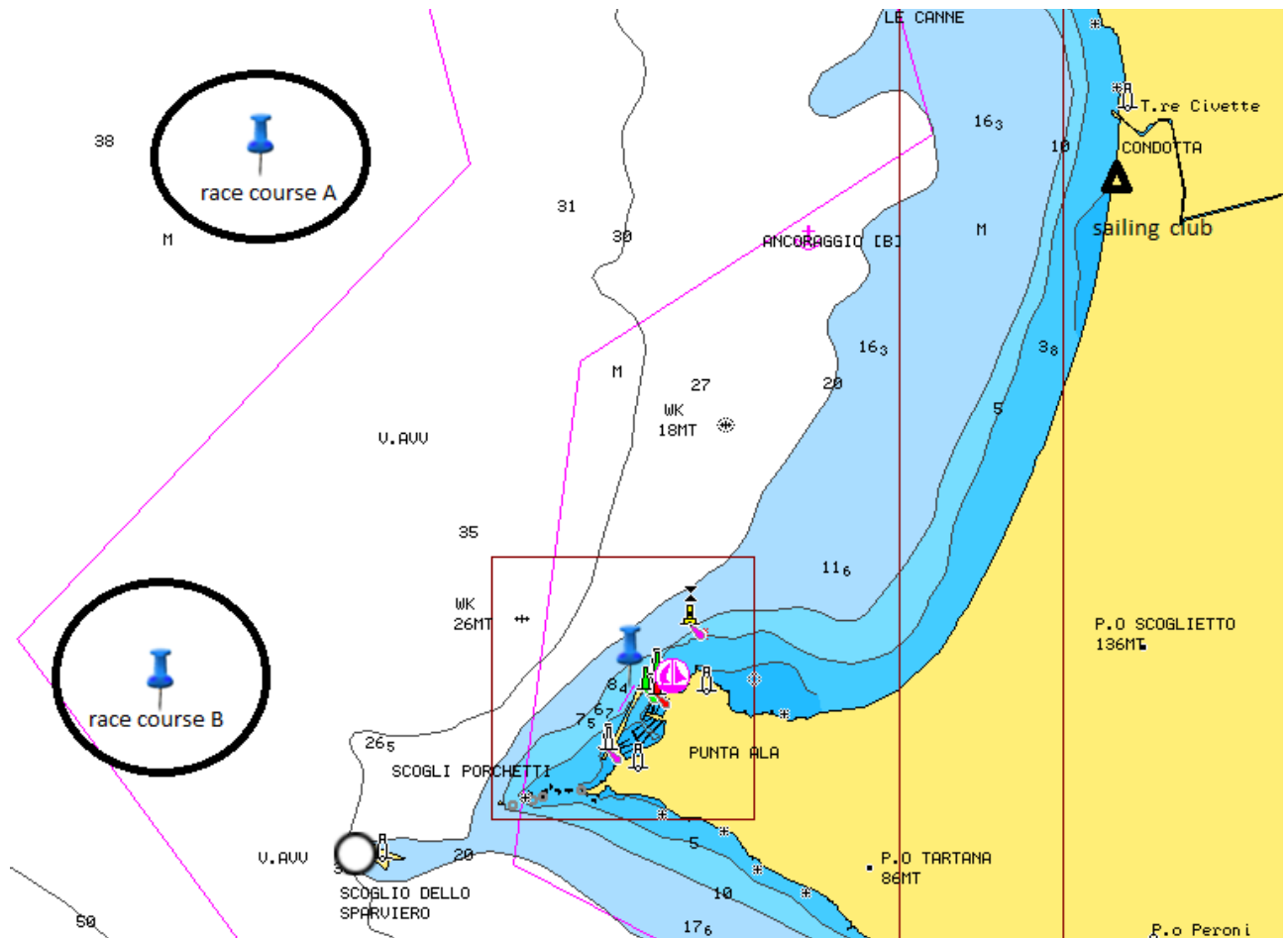
### **27 RIGHTS TO USE NAME AND LIKENESS**

By participating in this event, competitors automatically grant to the organizing authority and the event sponsors the right, in perpetuity, to make, use, and show, at their discretion, any photography, audio and video recordings, and other reproductions of them made at the venue or on the water from the time of their arrival at the venue, until their final departure, without compensation.





## Attachment 1: Racing areas



Race Area A  
Approx. Lat. 42°50'53.66" North  
Approx. Long. 10°42'.06" EAST

Race Area B  
Approx. Lat. 42°48'50.34" North  
Approx. Long. 10°41'58.97" EAST  
Radius 0,8mm



## Attachment 2: The course

Mark rounding order: Start – 1 – 2 – 3A/3B – 1 – 2 – 3A/3B – 1 – 2 – Finish

Marks 1 and 2 are to be passed to port.

Marks 3A and 3B are gate marks.

